

Download Instructions for DryCal Pro Software



1. Go to the DryCal Pro Download web page at: <http://drycal.mesalabs.com/drycal-pro-software/>.
2. Complete the "Free Download" registration form and click "Submit" in order to be taken to the software download home page.
3. Click the "Download Now" tab and save the DryCal Pro Installer EXE file to your local hard drive.
4. After the EXE has been successfully downloaded, open up "Downloads" folder and then browse the folder on your local hard drive where the file has been stored. The downloaded EXE file is a self-extracting ZIP file. Double click the file to extract the files.
5. Once the extraction is complete, a new folder entitled "DryCal Pro" will be created on your local hard drive in the same location where the user elected to save DryCal Pro Installer EXE file.
6. Prior to running the installer to install DryCal Pro, go to Windows Control Panel, followed by "System and Security" and "Change User Account Control Settings". Verify that UAC (User Account Control) setting is set to "Never Notify". If it is not, please set UAC to "Never Notify". If prompted, please reboot the PC.
7. Once the PC has been rebooted, login to Windows using a user with local admin privileges.
8. Double click the newly created "DryCal Pro" folder to browse its contents.
9. Right-click on the "Launch.exe" file and select "Run as Administrator" option. The DryCal Pro set-up window will appear. Select "Install DryCal Pro for Windows" to launch the software installation.

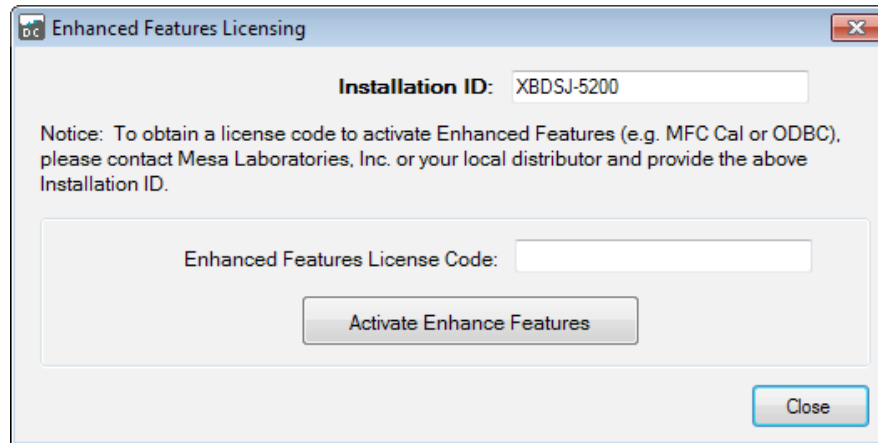


Accessing DryCal Pro Enhanced Features

For Operation with the Integrator Pro MFC/MFM Control & Readout Device

DryCal Pro Enhanced Features License Codes will be provided by Mesa Labs customer service team, please contact csbutler@mesalabs.com or call our Butler, NJ facility at (973) 492-8400. Mesa's customer service team will require your unique "Installation ID" in order to provide an Enhanced Features License Code.

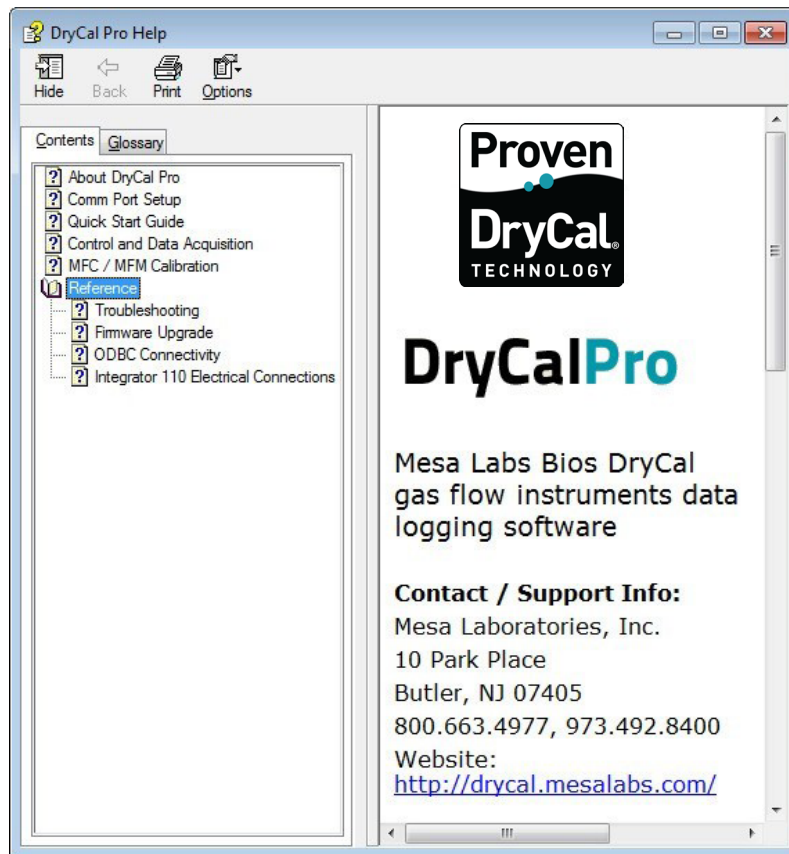
1. Once the free version of the DryCal Pro software has been downloaded – select "Tools>License Registration" and the following screen will appear containing your software Installation ID.



2. Once you have obtained your "Enhanced Features License Code" from Mesa Labs customer service department, simply copy and paste the code into the section above.
3. Click "Activate Enhanced Features" and the software will provide a confirmation that the license code was accepted and that the Enhanced Software features are now active for use.
4. In the top left corner of the DryCal Pro Software home page, "Enhanced Features Enabled" will appear along with the most recent revision level of the software.
5. You are now ready to begin utilizing the Enhanced Version of DryCal Pro.

Product Manual & Troubleshooting Options

1. The DryCal Pro Software Manual and Troubleshooting Options can be found by clicking "Help" on the software homepage main toolbar and then by selecting "Help..." once more from the drop down menu. The following screen will appear which will allow for the user to select the required information from the Contents and Reference sections of the help file.



Customers utilizing V 1.0 of DryCal Pro do not need to un-install this version of the software before installing V 1.1. The software installer will complete an upgrade rather than prompting the user to un- install a previous version.

System Requirements

- Windows® XP, Windows® 7
- Microsoft Excel® 2003 and up
- RS-232 port, or if your PC does not have an RS-232 port you will need a USB to RS-232 adapter

For additional questions please visit Mesa Labs our website at <http://drycal.mesalabs.com/> or contact our Butler, NJ office at csbutler@mesalabs.com / (973) 492-8400 and a representative will be pleased to assist you.