

Supplemental Manual: Downloading Sentry II Data to a PC

1.0 Introduction

The Sentry II can download data to a PC spreadsheet, such as Excel or Lotus by following the instructions below.

Bios International does not offer technical support on serial port configuration. For assistance on serial port configuration and other Windows questions, please contact Microsoft™ Windows support.

Requirements

- Appropriate Interface Cable(s)
- A Microsoft Windows PC equipped with an open COM Port*

*Please see your IT professional for assistance in finding an open COM port if necessary.

2.0 Setting up a Windows HyperTerminal File for Sentry II

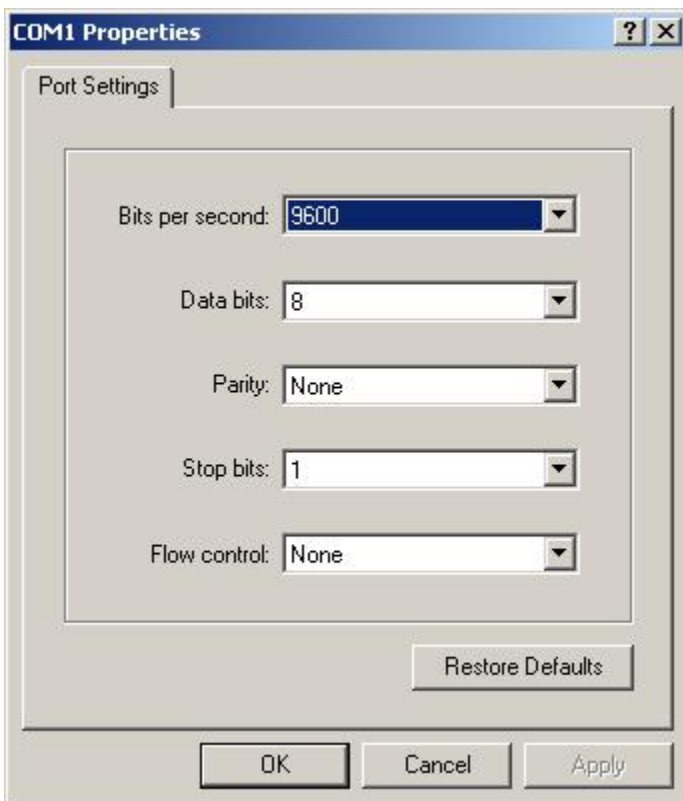
- 1 In Windows, select Start|Programs|Accessories|Communications|Hyperterminal|Hypertrm to display the **Connection Description** dialog.



- 2 In the **Name** box, type a name for the connection.
- 3 Click [OK] to display the **Connect To** dialog.



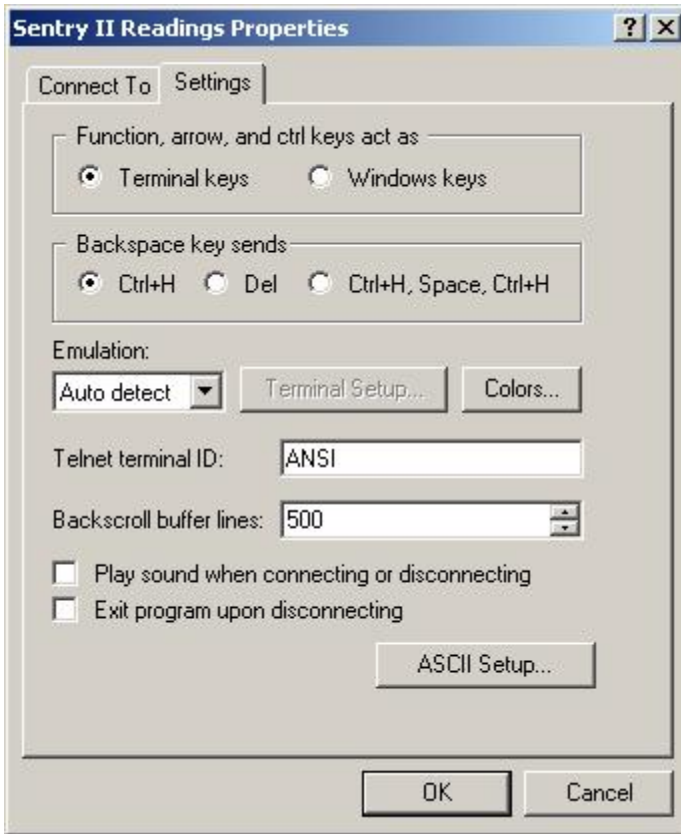
- 4 Use the **Connect Using** box to select the appropriate Com port. For assistance with determining which Com port you are using, please ask your IT professional.
- 5 Click [OK] to display the **Com Port Properties** dialog.



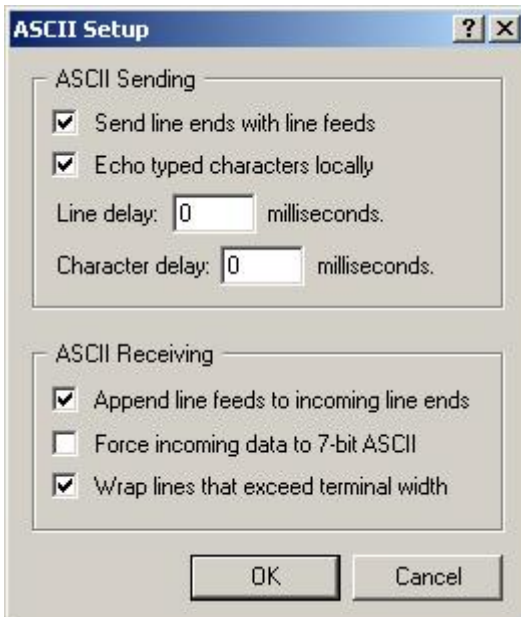
- 6 Set the **Port Settings** as follows
Bits per second: 9600
Data Bits: 8
Parity: None
Stop Bits: 1

Flow Control: None

- 7 Click [OK] to close **Com Port Properties** dialog.
- 8 In HyperTerminal window select File|Properties to open **Properties** dialog



- 9 Select the **Settings** tab.
- 10 Click [ASCII Setup] to open the **ASCII Setup** dialog.

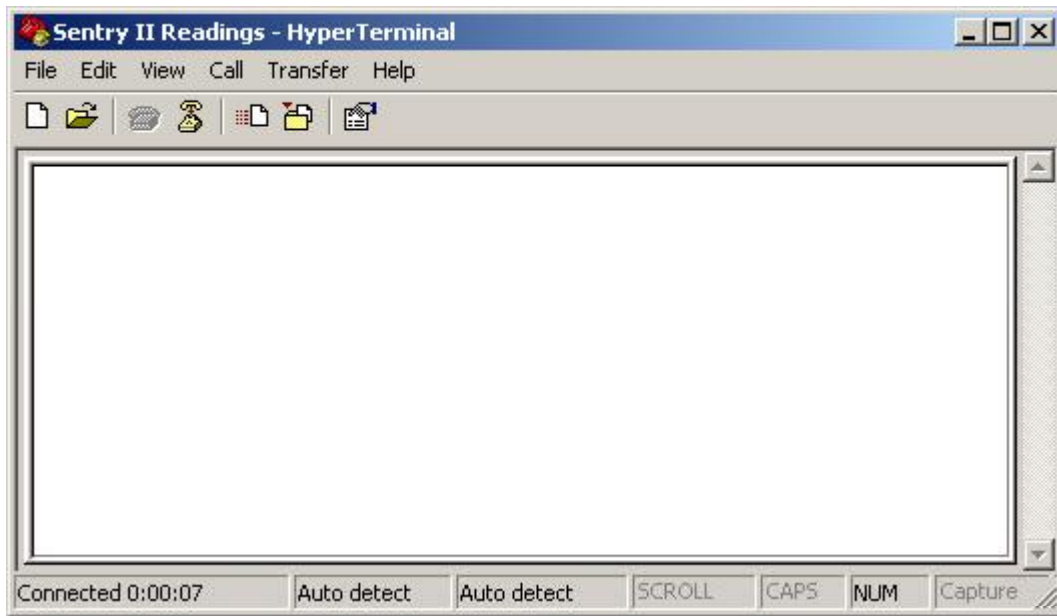


- 11 Choose Send line ends with line feeds and Echo typed characters locally.

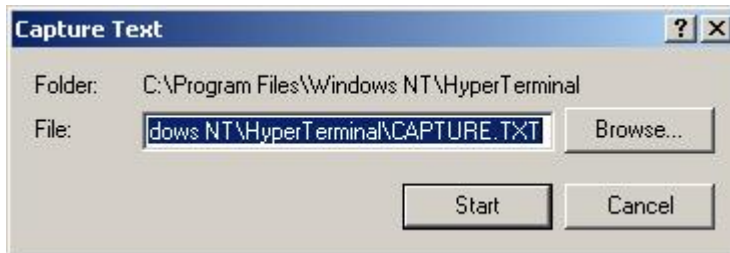
- 12 Set Line Delay and Character Delay to 0.
- 13 Choose Append line feed to incoming line ends and Wrap lines that exceed terminal width.
- 14 Click [OK] to close ASCII Setup dialog.
- 15 Click [OK] to close **Properties** dialog.
- 16 In HyperTerminal select File|Exit to open the **HyperTerminal** dialog.
- 17 Click [Yes] when asked "Are you sure you want to disconnect now?"
- 18 Click [Yes] when asked "Do you want to save session?"
- 19 The **HyperTerminal** file that you set up can be found under Start|Programs|Accessories|Communications|Hyperterminal|

3.0 Taking Flow Readings

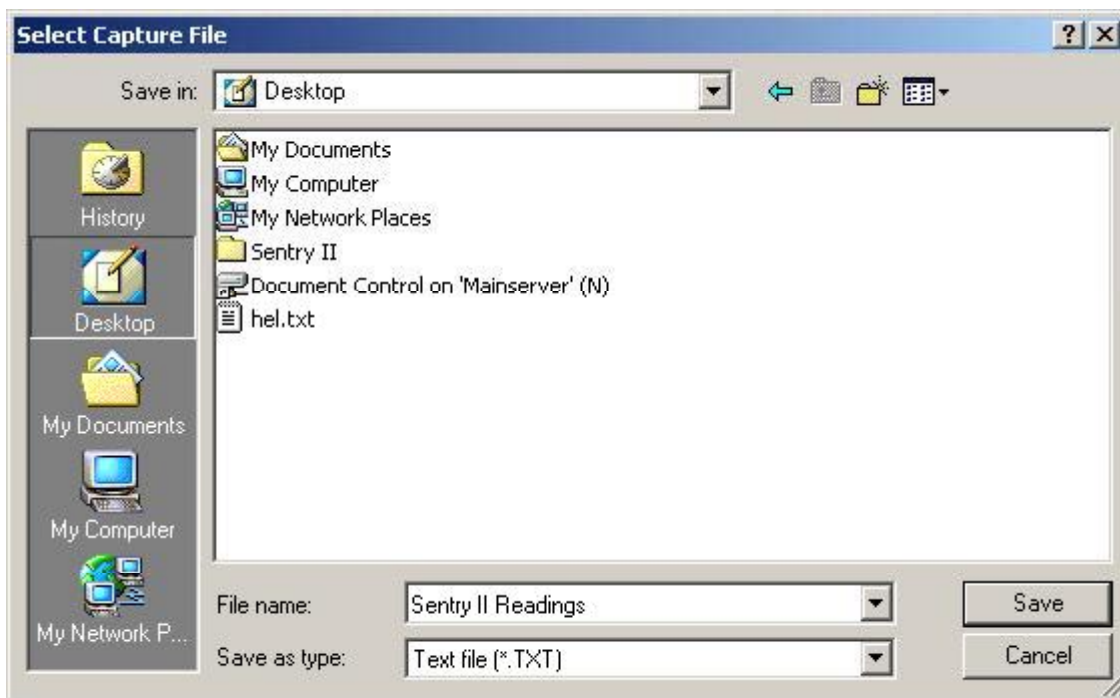
- 1 Turn the Sentry II on
- 2 Attach the appropriate interface cable to the Sentry II and the Com Port
- 3 Open the **HyperTerminal** connection that you created



- 4 Select Transfer|Capture Text to display the **Capture Text** dialog.



- 5 Enter a file name. (If designating the file name directly from the **Capture Text** dialog without browsing, be sure to include a .txt suffix) or click [Browse] to display the **Select Capture File** dialog.



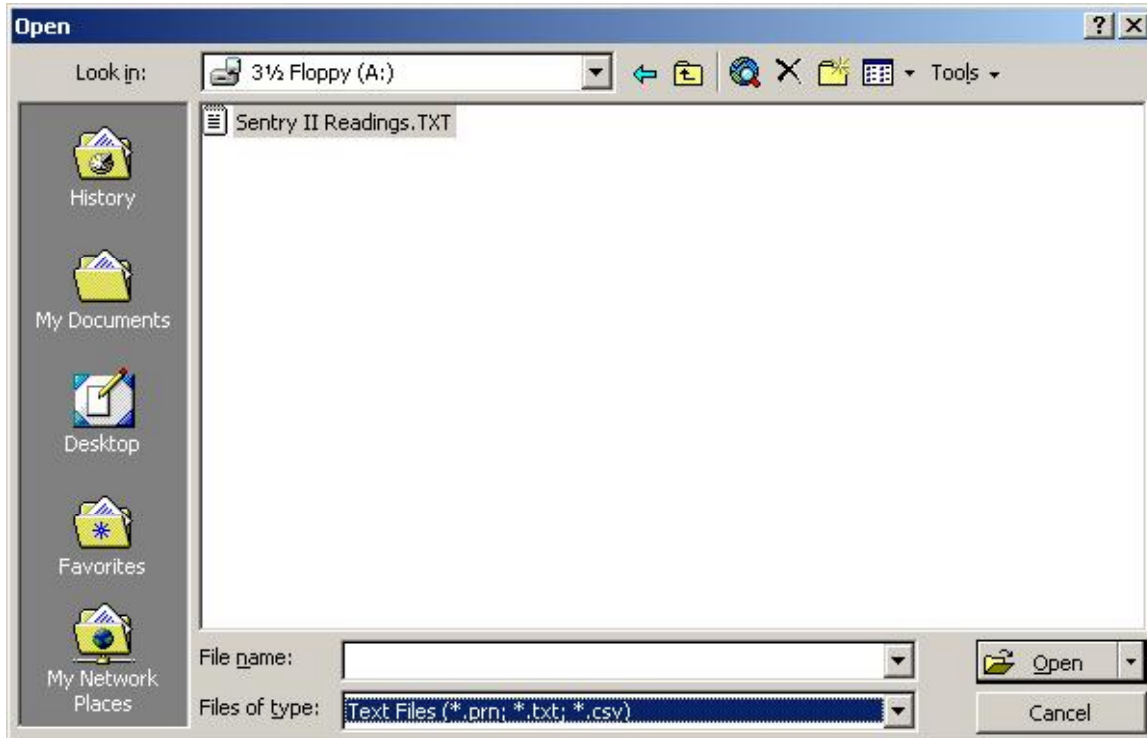
- 6 Select your file and click [Start] to close the **Capture Text** dialog
- 7 Connect the RS-232 Cable from the computer to the RS-232 port on the Sentry II
- 8 From the Sentry Main Menu, select "<3> READ" and hit **Enter**
- 9 On the Sentry, select "<3> RS-232" and hit **Enter**
- 10 Data will read into Hyperterminal.
- 11 Upon completion, select Transfer|Capture Text...|Stop
- 12 Select File|Exit to display **HyperTerminal** dialog
- 13 Click [Yes] when asked, "Are you sure you want to disconnect now?"

4.0 Opening the Data in a Spreadsheet or Database Program

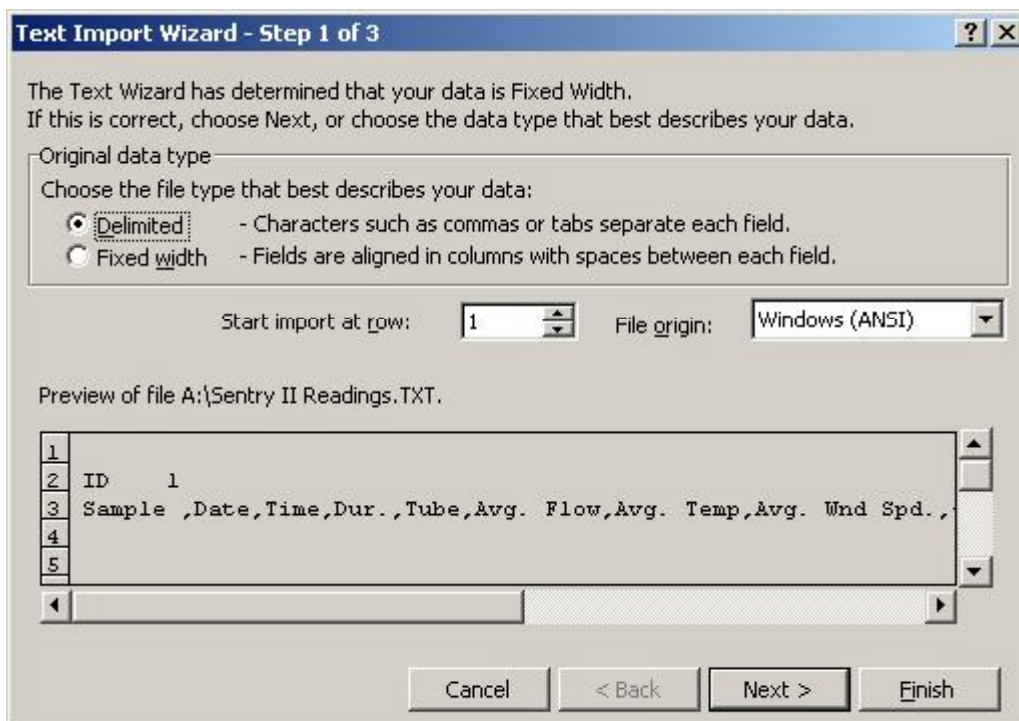
The data that was printed to the HyperTerminal file can be opened in most spreadsheet or database programs. You can import the tab delimited text file that you created. Below is an example of how to import your information into Microsoft Excel.

Importing information to Microsoft Excel

- 1 Select File|Open to display the **Open** dialog

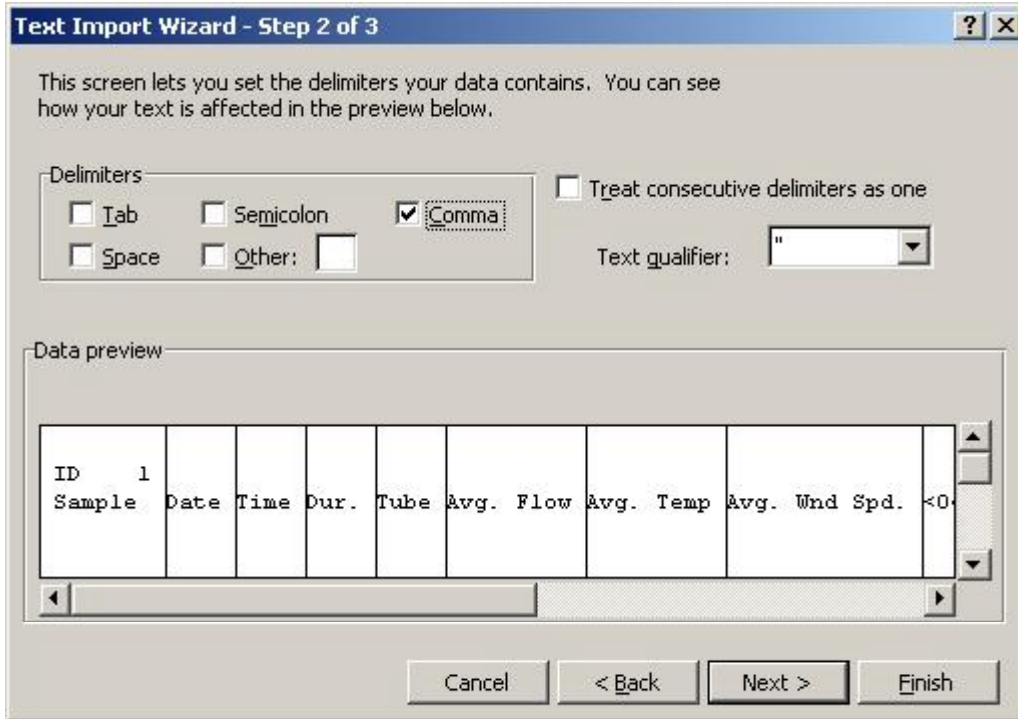


- 2 In the **Open** dialog, from the drop down [Files of Type] menu, select [Text Files]
- 3 Select the file that you saved your data in and click [OK] to display the **Text Import Wizard-Step 1 of 3** dialog

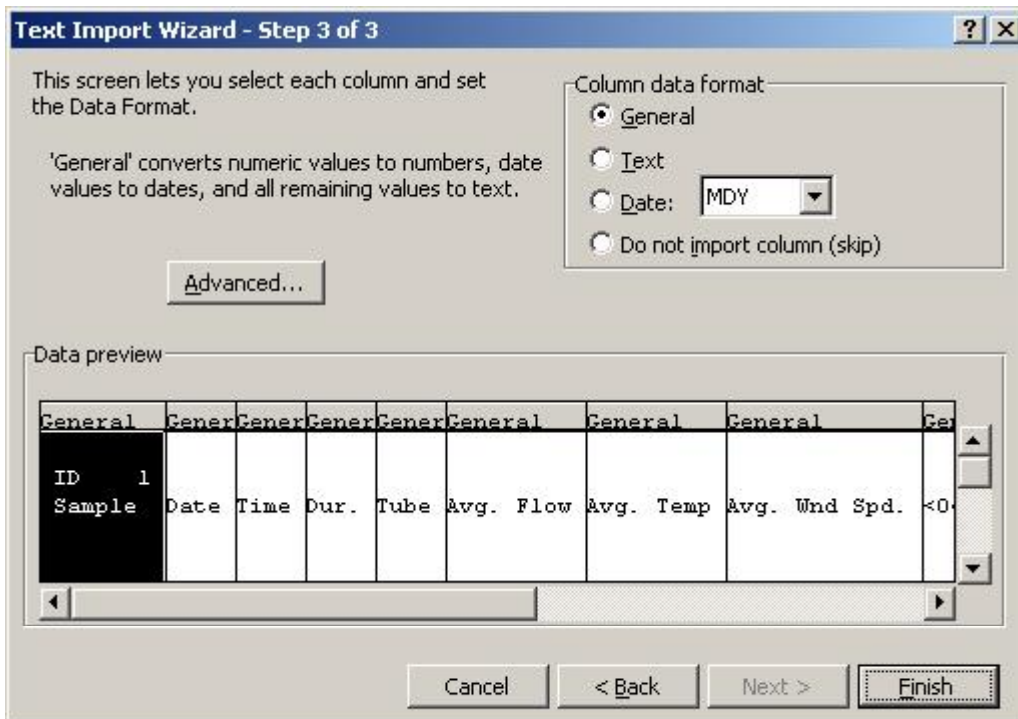


- 4 Where the dialog asks you to "Choose the file type that best describes your data:", mark [Delimited]

- 5 Click [Next] to display the **Text Import Wizard-Step 2 of 3** dialog



- 6 Under "Delimiters" make sure that [Tab] is selected
- 7 Click [Next] to display the **Text Import Wizard-Step 3 of 3** dialog



- 8 Click [Finish] to close the **Text Import Wizard-Step 3 of 3** dialog
- 9 The information that you collected in your HyperTerminal file will be imported into Microsoft Excel.

Bios International Corporation

10 Park Place

Butler, New Jersey, USA 07405

Phone (973) 492 8400

Toll Free (800) 663 4977

Fax (973) 492 8270

Email sales@biosint.com

Web www.biosint.com



© 2002 Bios International Corporation

MK01-8 Rev. A