

## **Supplemental Manual: Downloading DryCal<sup>®</sup> Data to a PC**

## **Table of Contents**

<b>1.0</b>	<b>Introduction</b>	<b>2</b>
<b>2.0</b>	<b>Setting up a Windows HyperTerminal File for DryCal</b>	<b>2-4</b>
<b>3.0</b>	<b>Taking Flow Readings</b>	<b>5-6</b>
<b>4.0</b>	<b>Converter Kits Setup</b>	<b>6</b>
<b>5.0</b>	<b>Opening the Data in a Spreadsheet or Database Program</b>	<b>7-8</b>

## 1.0 Introduction

The DryCal DC-Lite can download data to a PC spreadsheet, such as Excel or Lotus, via the Nexus control module. The DryCal DC-2, ML-350, ML-500 and ML-800 can download directly to a PC using the serial port located on the back of each unit.

Bios International does not offer technical support on serial port configuration. For assistance on serial port configuration and other Windows questions, please contact Microsoft™ Windows support.

### Requirements

- A Microsoft Windows PC equipped with an open COM Port\*
- Appropriate Interface Cable(s)

\*Please see your IT professional for assistance in finding an open COM port if necessary.

## 2.0 Setting up a Windows HyperTerminal File for DryCal

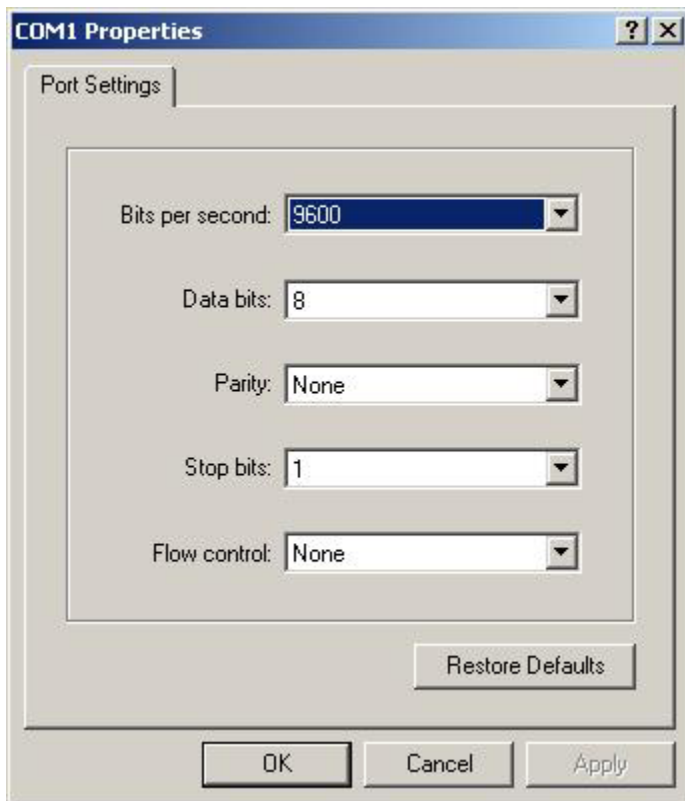
- 1 In Windows, select Start|Programs|Accessories|Communications|Hyperterminal|Hypertrm to display the **Connection Description** dialog box.



- 2 In the **Name** box, type a name for the connection.
- 3 Click **OK** to display the **Connect To** dialog box.

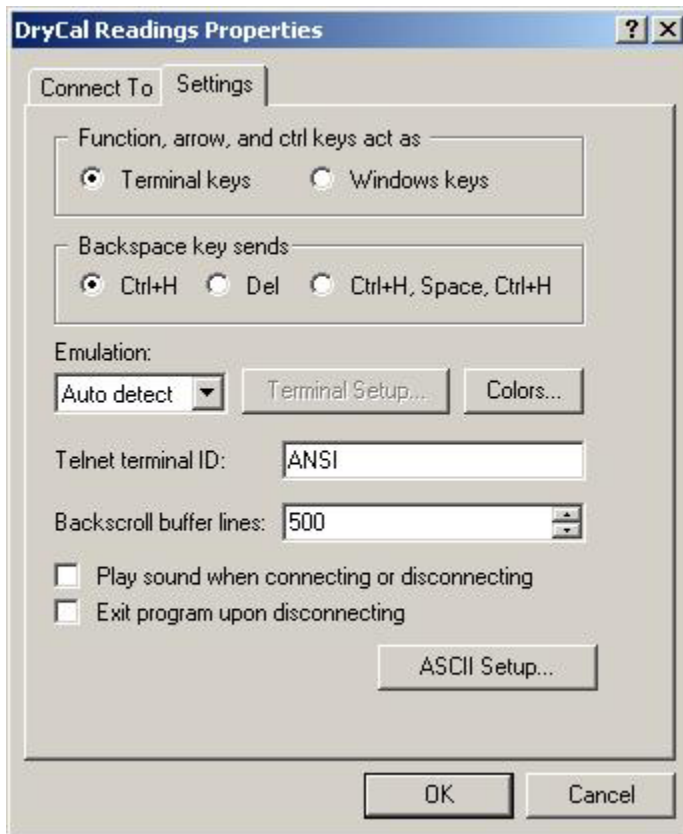


- 4 In the **Connect Using** dialog box to select the appropriate Com port from the **Connect using** list. For assistance with determining which Com port you are using, please ask your IT professional.
- 5 Click **OK** to display the **Com Port Properties** dialog box.

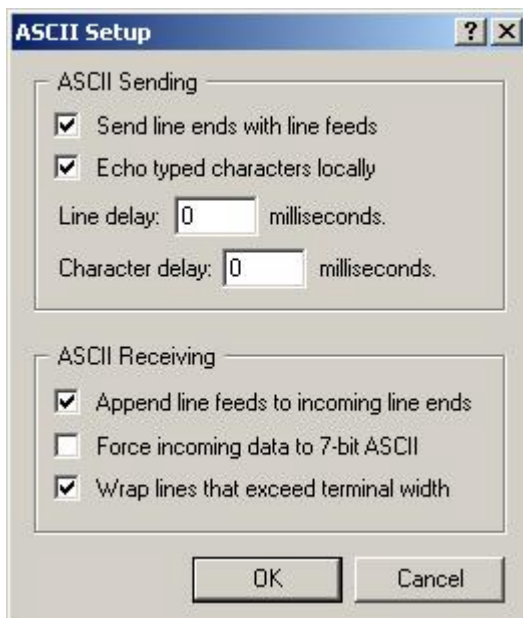


- 6 Set the **Port Settings** as follows  
**Bits per second:** 9600  
**Data Bits:** 8  
**Parity:** None  
**Stop Bits:** 1  
**Flow Control:** None

- 7 Click **OK** to close **Com Port Properties** dialog box.
- 8 In **HyperTerminal** window select File|Properties to open **Properties** dialog box.



- 9 Select the **Settings** tab.
- 10 Click **ASCII Setup** to open the **ASCII Setup** dialog box.



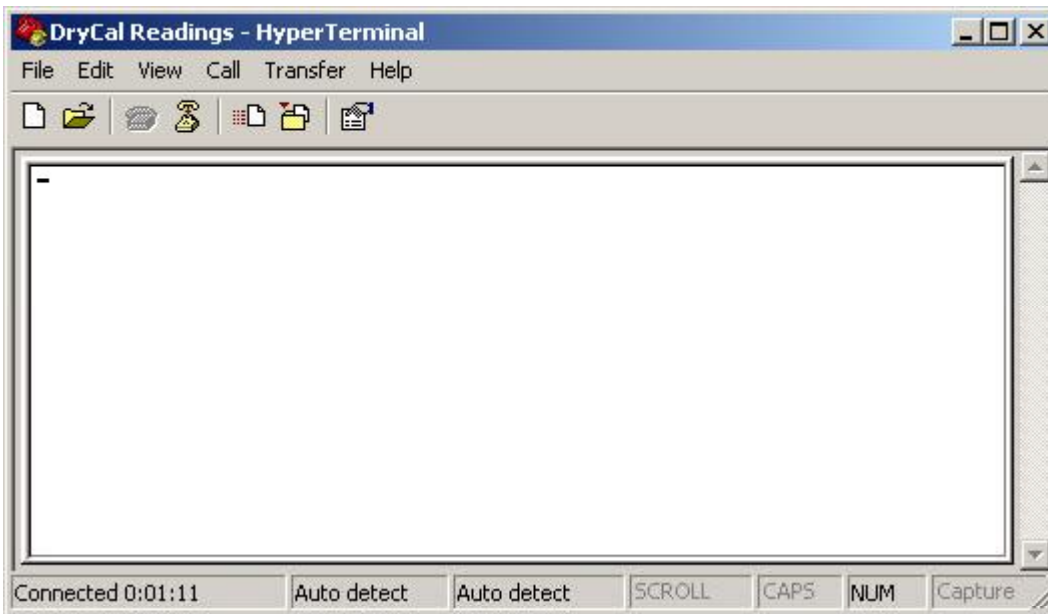
- 11 Select **Send line ends with line feeds** and **Echo typed characters** locally.
- 12 Set **Line Delay** and **Character Delay** to 0.

- 13 Select **Append line feed to incoming line ends** and **Wrap lines that exceed terminal width**.
- 14 Click **OK** to close the **ASCII Setup** dialog box.
- 15 Click **OK** to close **Properties** dialog box.
- 16 In HyperTerminal select File|Exit to open the **HyperTerminal** dialog box.
- 17 Click **Yes** when asked "Are you sure you want to disconnect now?".
- 18 Click **Yes** when asked "Do you want to save session?".
- 19 The **HyperTerminal** file that you set up can be found under Start|Programs|Accessories|Communications|Hyperterminal|.

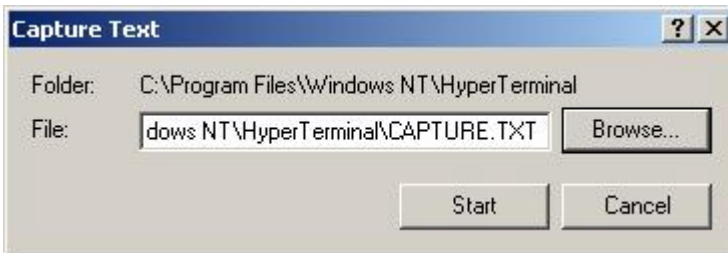
### 3.0 Taking Flow Readings

If using a DC-Lite and Nexus in combination, please note, DC-Lites connected to the Nexus will shut off automatically after 60 minutes of inactivity.

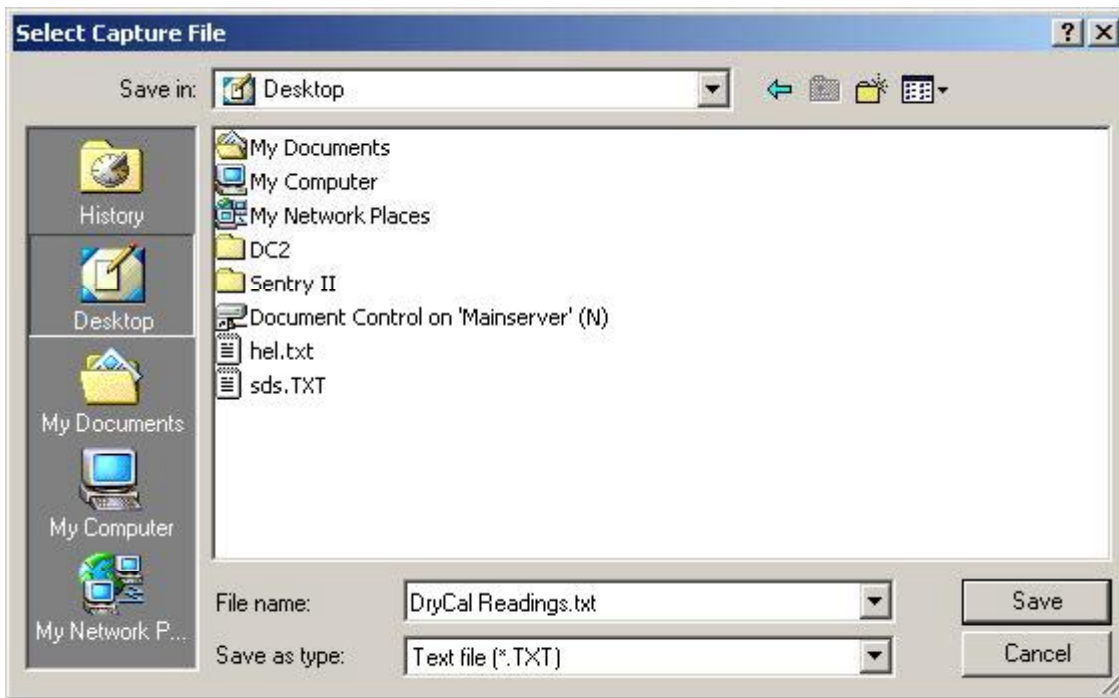
- 1 Turn the DryCal on and attach to computer using the appropriate cables.
- 2 Open the HyperTerminal connection that you created



- 3 Select Transfer|Capture Text to display the **Capture Text** dialog box.



- 4 Enter a file name. (If designating the file name directly from the **Capture Text** dialog box without browsing, be sure to include a .txt suffix) or click **Browse** to display the **Select Capture File** dialog box



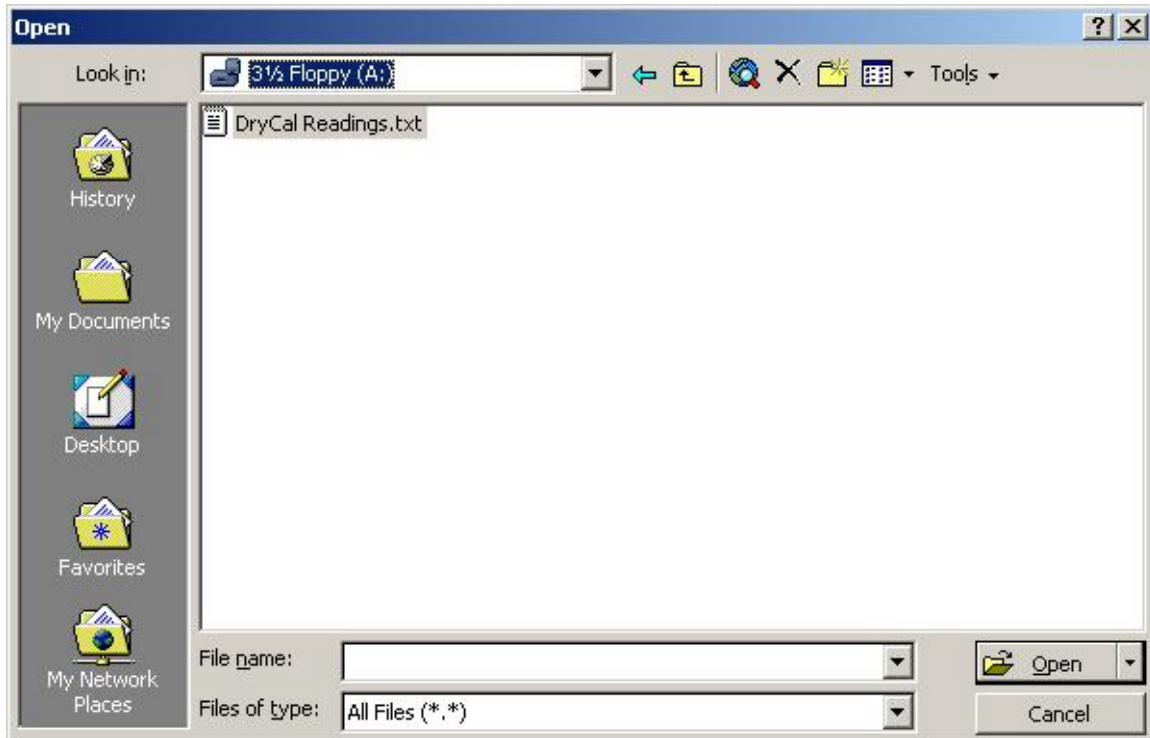
- 5 Select your file and click **Start** to close the **Capture Text** dialog box.
- 6 Begin taking readings with the DryCal.
- 7 Take readings as necessary.
- 8 Upon completion, select Transfer|Capture Text...|Stop.
- 9 Select File|Exit to display **HyperTerminal** dialog box.
- 10 Click **Yes** when asked, "Are you sure you want to disconnect now?".

## 4.0 Opening the Data in a Spreadsheet or Database Program

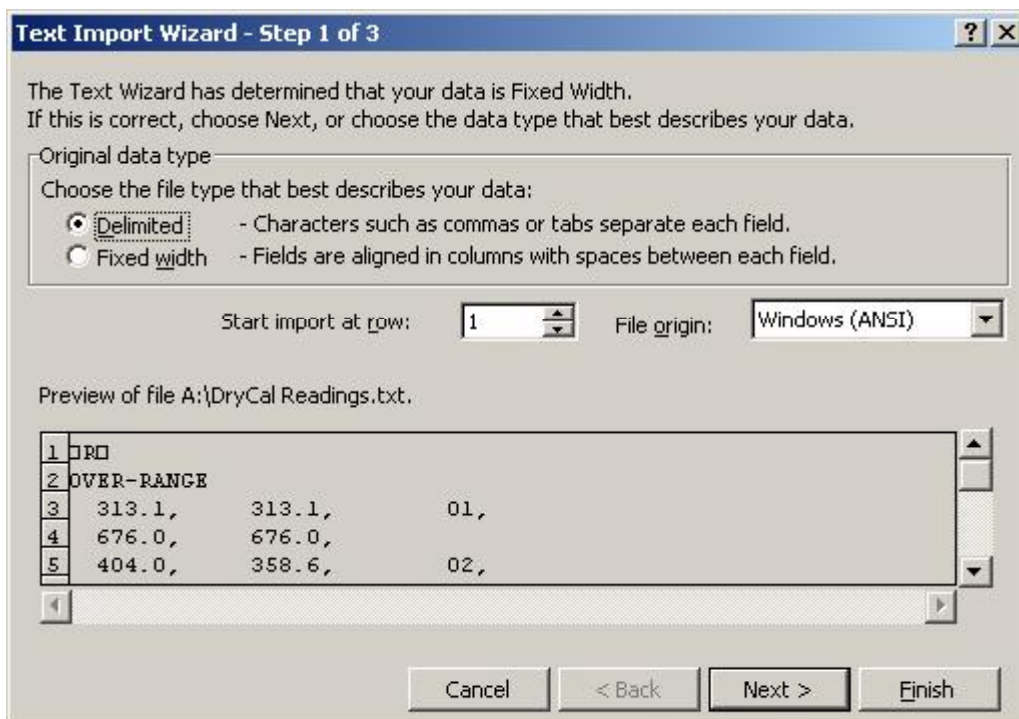
The data that was printed to the HyperTerminal file can be opened in most spreadsheet or database programs. You can import the tab delimited text file that you created. Below is an example of how to import your information into Microsoft Excel.

### Importing information to Microsoft Excel

- 1 Select File|Open to display the **Open** dialog box.

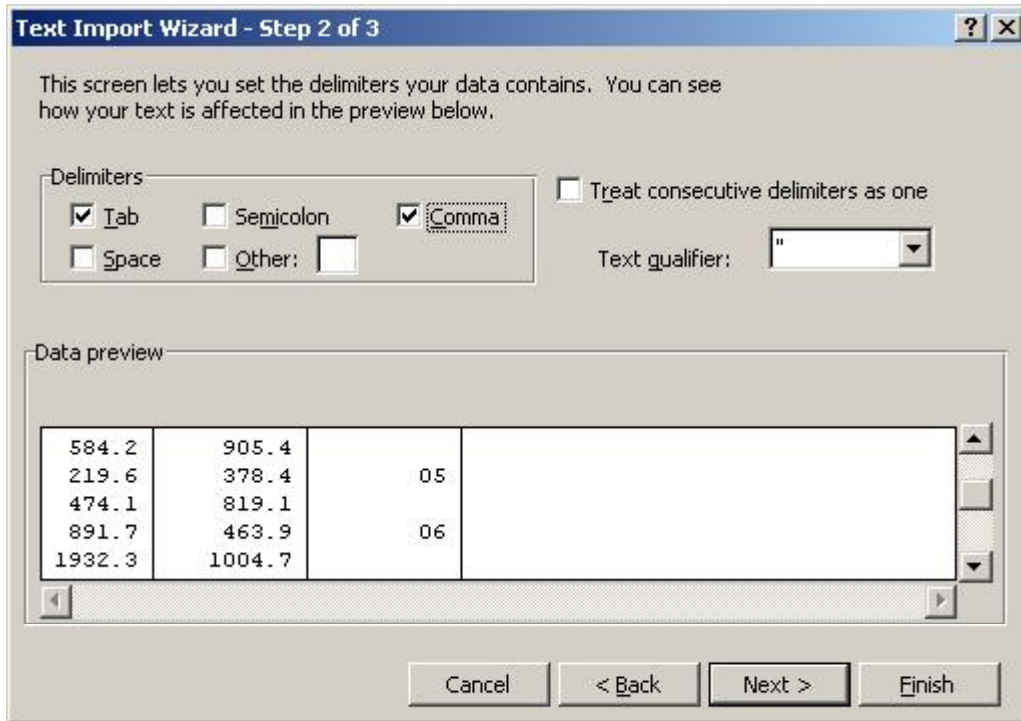


- 2 In the **Open** dialog box, select **Text Files** from the **Files of type** list.
- 3 Select the file that you saved your data in and click **OK** to display the **Text Import Wizard-Step 1 of 3** dialog box.

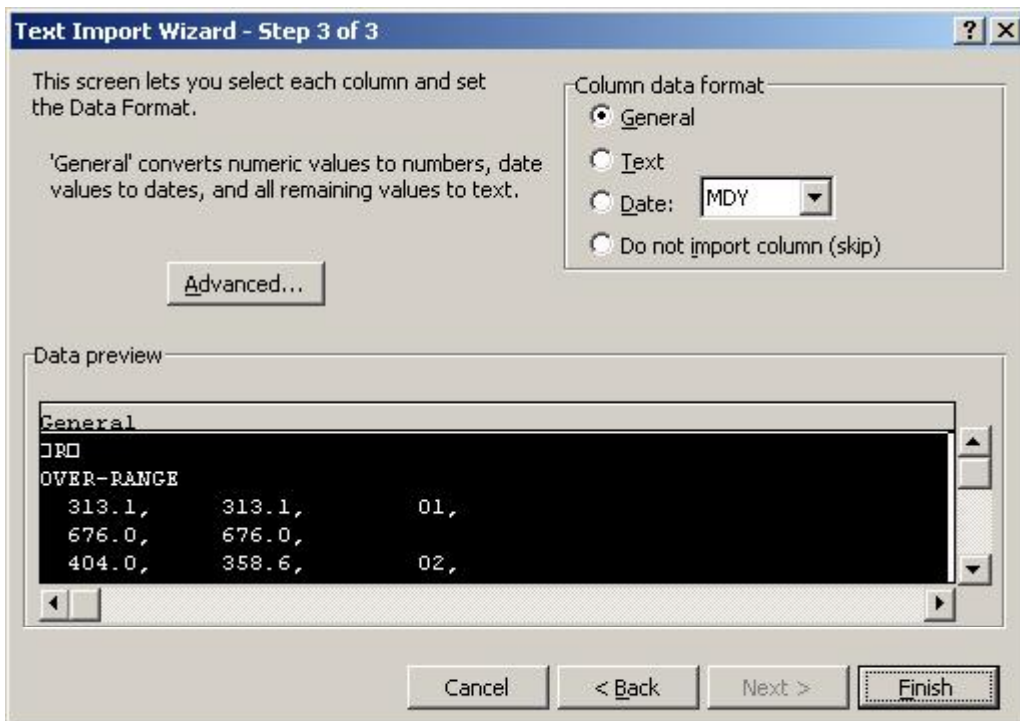




- 4 Click the **Delimited** option button.
- 5 Click **Next** to display the **Text Import Wizard-Step 2 of 3** dialog box.



- 6 Select the **Tab** and **Comma** text boxes.
- 7 Click **Next** to display the **Text Import Wizard-Step 3 of 3** dialog box.



- 8 Click **Finish** to close the **Text Import Wizard-Step 3 of 3** dialog box.
- 9 The information that you collected in your HyperTerminal file will be imported into Microsoft Excel.

Bios, a division of Mesa Labs  
10 Park Place  
Butler, New Jersey, USA 07405  
Phone (973) 492 8400  
Toll Free (800) 663 4977  
Fax (973) 492 8270

Email [sales@drycal.com](mailto:sales@drycal.com)  
Web [www.mesalabs.com](http://www.mesalabs.com)